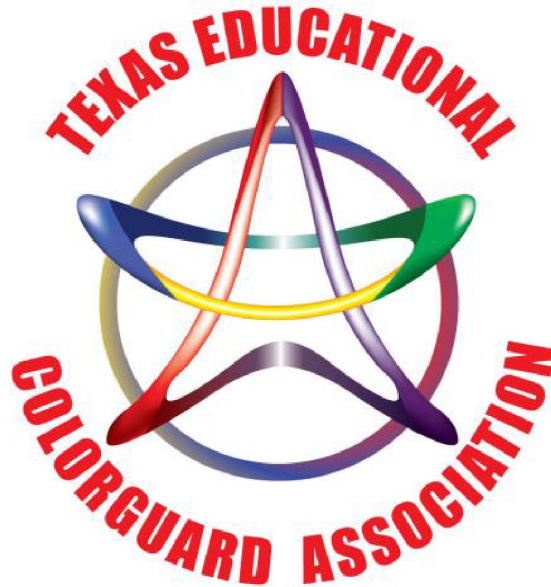


LA JOYA ISD
BUILDING A LEGACY
of EXCELLENCE



2019 TECA Sanctioned Event sponsored by
The Palmview High School Lobo Band Boosters
and

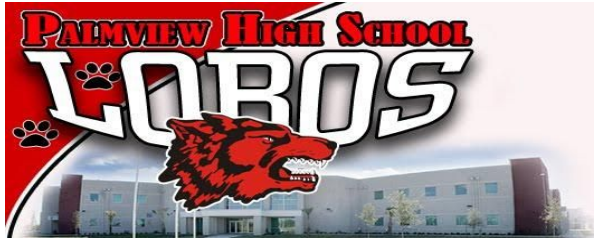
Palmview Performance Ensemble



PHS Lobo Winterguard Invitational

January 19, 2019

Palmview High School Gymnasium



LA JOYA ISD
BUILDING A LEGACY
of EXCELLENCE



I. Location, Directions

The PHS Lobo Winterguard Invitational will be held at Palmview High School which is located at 3901 N. La Homa Rd., Mission, TX 78573.

From San Antonio or points north:

Take US-281 South to McAllen, TX.

Take exit US-83 W/McAllen and merge onto I-2/US-83 W. Continue on US-83 West until you get to Mission TX.

You will then take the La Homa Rd. / Bensten Palm Dr. Exit (TX-364 N/W Expy 83 Frontage Rd.)

Turn right on La Homa Rd. and Drive 3 miles north.

School will be on your left hand side.

From Laredo:

Take US-83 South to Mission, TX

Exit W Expy 83 / E Frontage Rd.

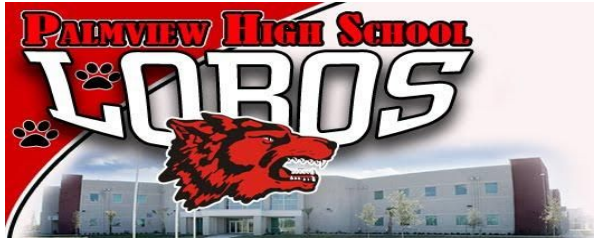
Turn left onto La Homa Rd.

Go north 3 miles, school will be on your left hand side.

If you are not too clear on the directions please use any online direction finder and input the school address:

3901 N. La Homa Rd.

Mission, TX 78573



LA JOYA ISD
BUILDING A LEGACY
of EXCELLENCE



II. Contest Flow

**All contest rules and regulations from the
2019 TECA Constitution and By-Laws and the
2019 TECA and WGI Rule Books will be followed.**

Parking

- All Spectators parking will be on the North side of the school.
- All Unit buses will park on the West side Bus Parking area behind the school and gym after units are dropped off at the cafeteria. The designated area for buses is the only area that buses can be at so that we can have room for outdoor warm-up areas in front of school and for equipment trucks.
- All Equipment trucks will park in front of the Performing Arts / Cafeteria student parking lot. This area is easier for percussion trucks/ props to unload.
- There will be security to give instructions to bus drivers. PLEASE GIVE ALL DRIVERS A PARKING MAP. It will help the flow of the contest when everyone knows where they need to be.

Props

- All props, performance shoes and equipment must be padded and taped according to the TECA and WGI rule book specifications. Please refer to the 2014 WGI Color Guard and Adjudication Manual and Rule Book.

“Check In”

- The check in table will be located at the South entrance of the cafeteria. Performers must show the Check-in representative that their equipment is correctly padded and taped.



LA JOYA ISD
BUILDING A LEGACY
of EXCELLENCE



Maps of the school and performance times will also be available. (Please also print one out before you arrive for your reference)

- Once you are checked in you will proceed to the Cafeteria for all guard/percussion holding area. Look for you designated tables.
- (The Stage area will be off limits to all students)

Guard, Crew and Staff Admission

Unit Admission

- Performing members and crew members will need to check in at the “check in table” prior to warm up. Wristbands will be issued to all guard, 2 directors plus 10 student crew members.

Cafeteria Area / Colorguard Area

- Tables and areas will be set up for each organization.
- Props/Floors and larger equipment may be stored in the high school hallway against the walls. (Look for the signs or ask a PHS band student wearing black school shirts. Once you perform we ask that you load any props that you have to alleviate congestion. The hallway is long and there is plenty of space.)
- **The cafeteria and hallways are traffic areas only. Students and Staff will not spin, toss or maneuver equipment inside any of the buildings at any time other than in designated areas.**
- If you need an extra equipment warm-up, you may do so outside in the designated warm up area (refer to map).

(Official Warm-Up Time)

- **Body Warm-Up, Equipment Warm-Up and Performance Notes**
 - When it is time for your guard to be “READY” according to the schedule, please report to the “READY TABLE” located in the high school hallway. You will be escorted by a monitor to each warm up area and to the performance gym.
 - Body warm up will be in the PHS Dance A and B. Students may stretch or do a body type of run through. No equipment will be utilized during this segment of the official warm up time.



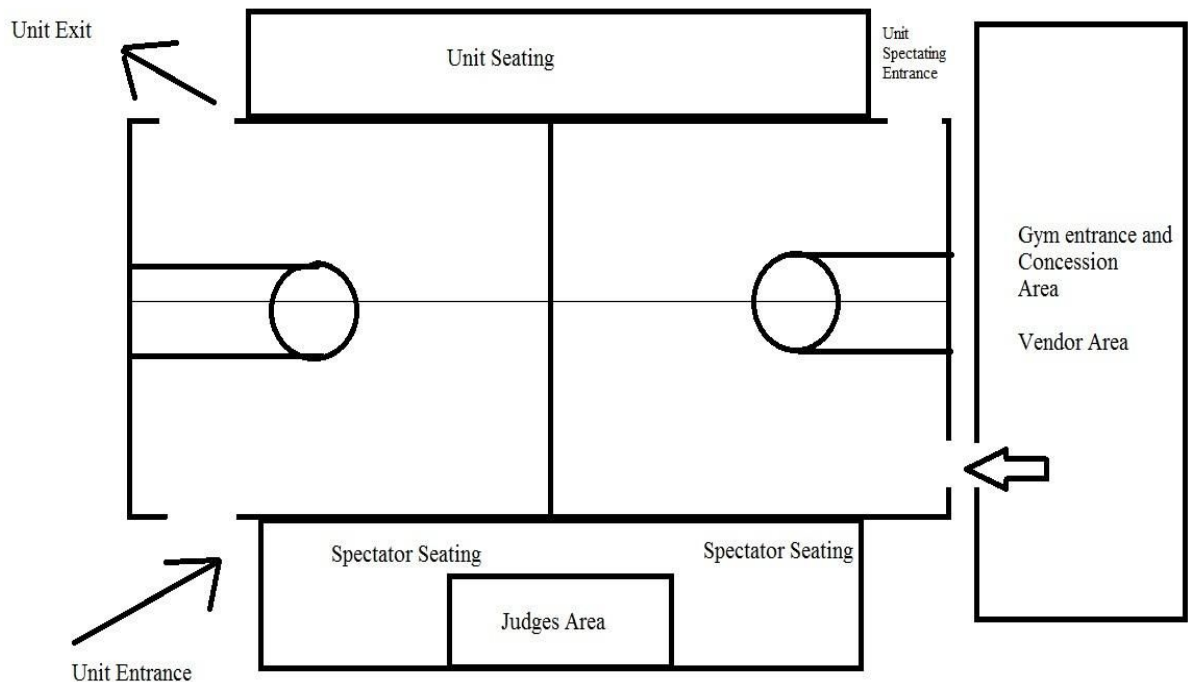
LA JOYA ISD
BUILDING A LEGACY
of EXCELLENCE

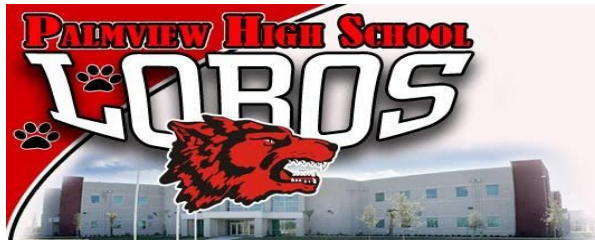


- After body warm up, your guard will be led to the Mariachi Hall and be placed in holding until their equipment warm-up time starts.
- Equipment Warm-up will be at the Band Hall. There is plenty of space to use equipment in the room. A standard size guard floor fits comfortably in the room and the ceilings are quite high. A sound system will be made available to you in both body and equipment warm up areas if you need one.
- After your equipment warm-up, your guard will be led to the performance area. You will be placed in holding until your official set up and performance time starts.

WE WILL BE UTILIZING A HORIZONTAL CENTER LINE FLOW FOR THE PERFORMANCE AREA.

From audience perspective, you will enter from the Left and exit to the Left.





LA JOYA ISD
BUILDING A LEGACY
of EXCELLENCE



Post Performance

- After you exit the performance area, staff members will need to make sure that all of their equipment is put away, then proceed to the sound table and pick up your show music.
- Judges' comments will be delivered electronically through Competition Suite.
- There will be multiple retreats scheduled throughout the day.
- As always, there will be a critique session hosted by the adjudicators and TECA for you to attend. Thank you for listening to your comments before entering critique. Critique will take place in the Band Hall.
- If you have a problem with any of your judges' comments, you will need to fill out the **WGI Color Guard Instructors Evaluation Form** from your 2019 WGI Color Guard and Adjudication Manual and Rule Book.

III. Admission (Spectators)

Student \$3.00 Adult \$5.00

Admission is good for the entire day. Wristbands will be provided. You must show your wristband to enter the performance area.

Air Grams will also be available for purchase.

IV. Concessions

- Concessions will be available to everyone outside the HS Gym.

V. Online help and Information

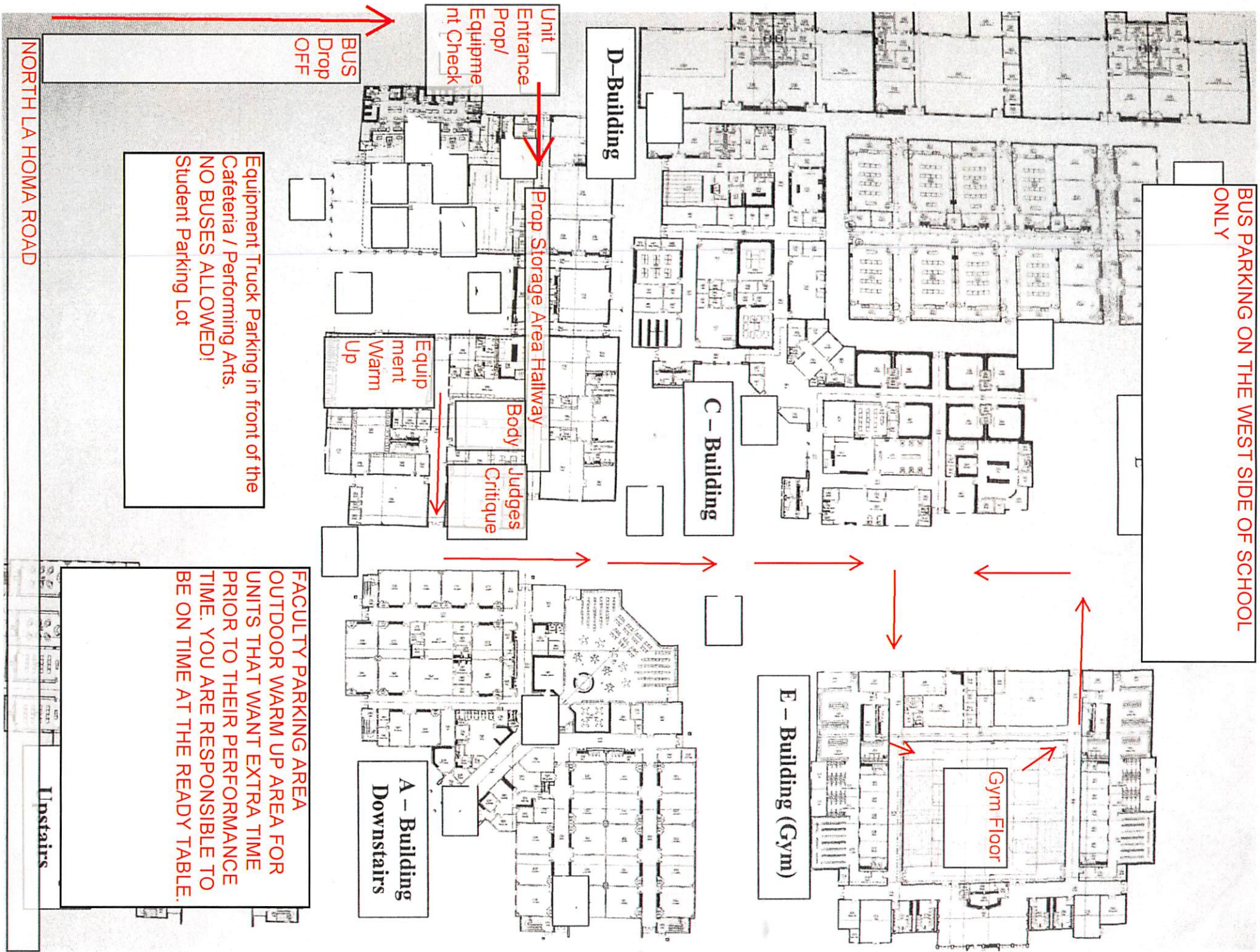
You may get online information and help via the TECA website at

<http://www.go-teca.org>

If you have any direct questions for me as the show host, my email is jacobbanda@aol.com

My cell phone is 956-655-5686-----Jacob Banda , PHS Director of Bands

BUS PARKING ON THE WEST SIDE OF SCHOOL ONLY

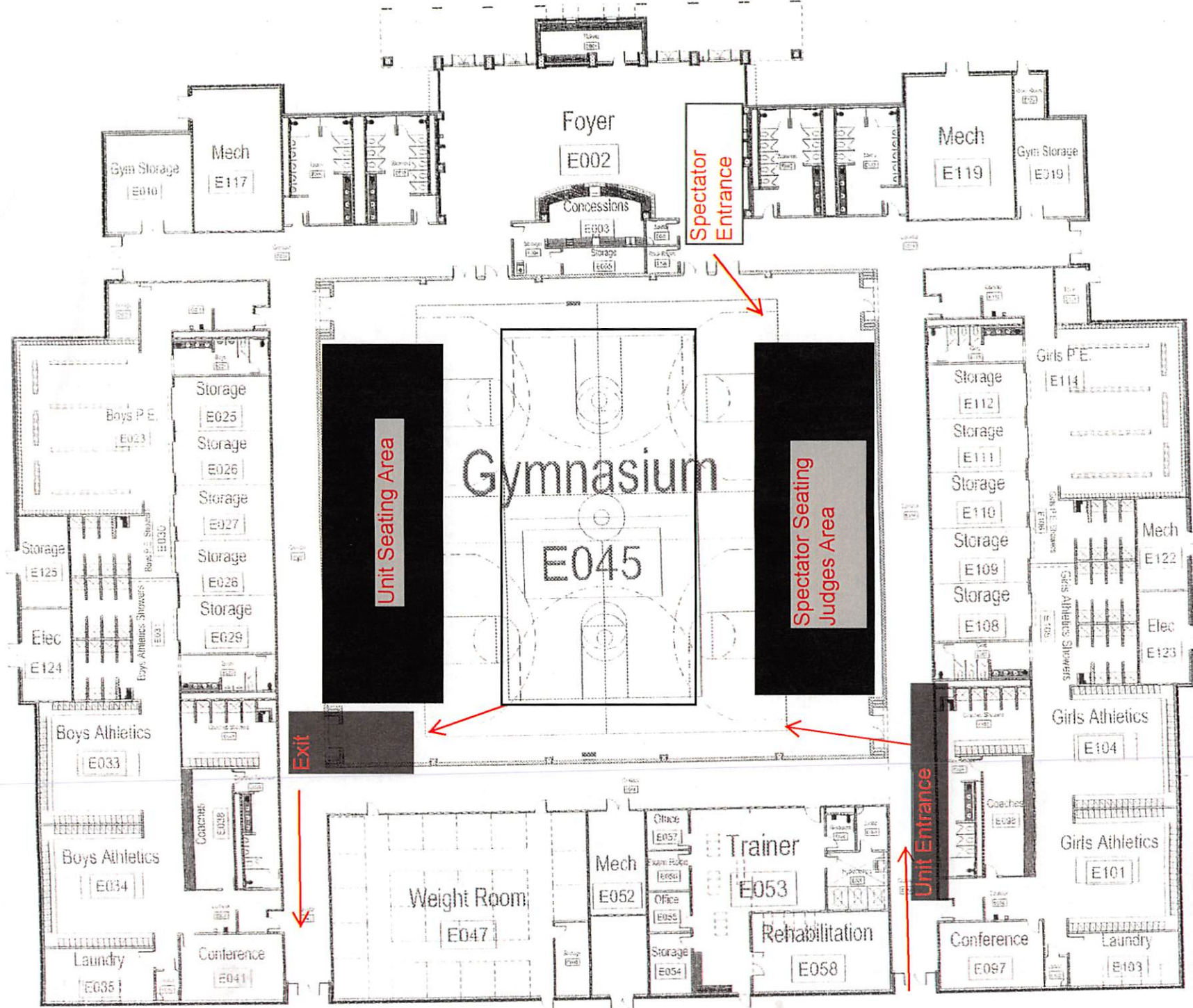


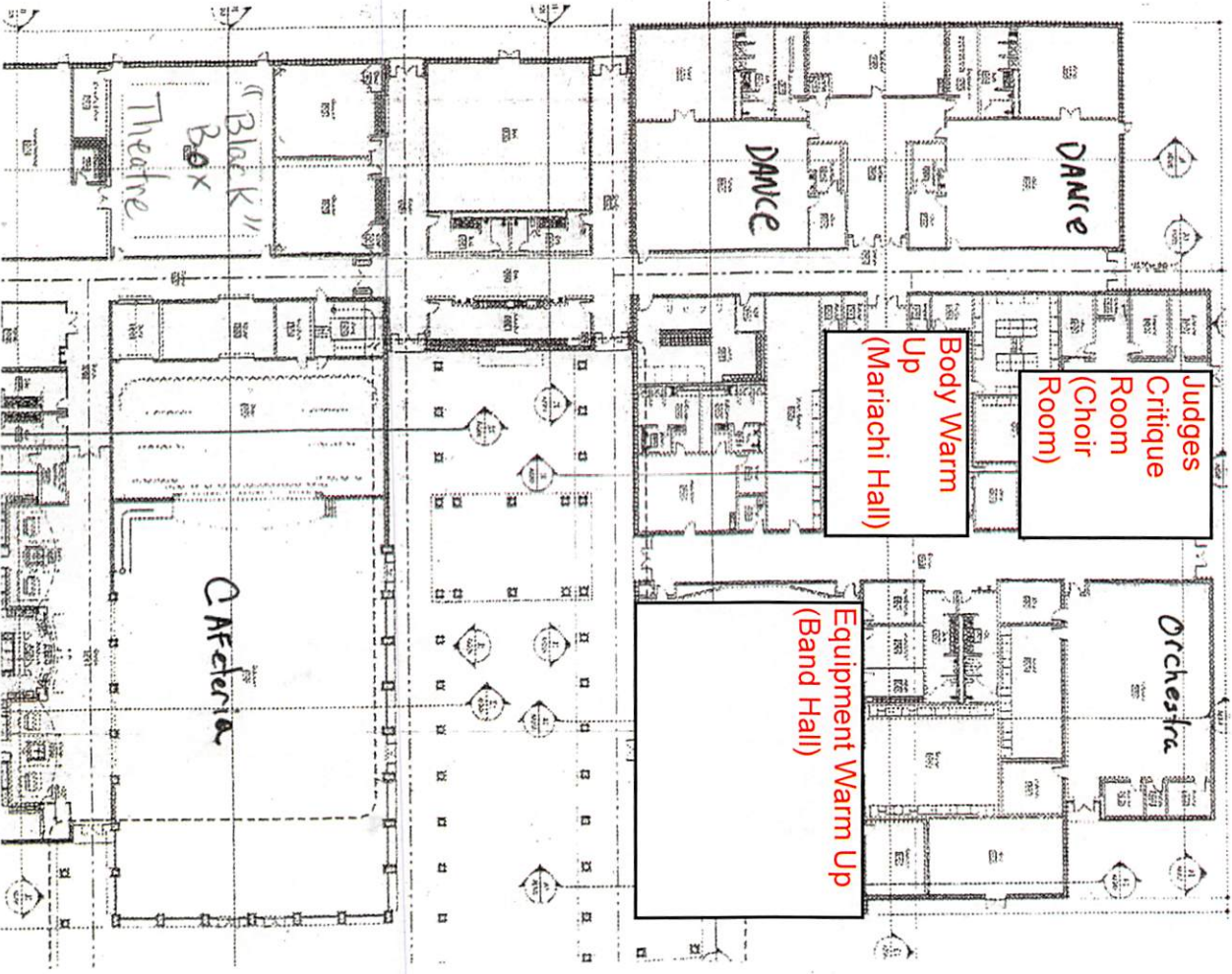
Equipment Truck Parking in front of the Cafeteria / Performing Arts. NO BUSES ALLOWED! Student Parking Lot

FACULTY PARKING AREA OUTDOOR WARM UP AREA FOR UNITS THAT WANT EXTRA TIME PRIOR TO THEIR PERFORMANCE TIME. YOU ARE RESPONSIBLE TO BE ON TIME AT THE READY TABLE.

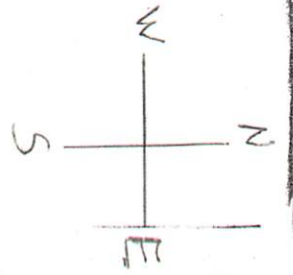
NORTH LA HOMA ROAD

Instairs





"B" Building



STUDENT PARKING

* Truck Loading + Unloading Area